

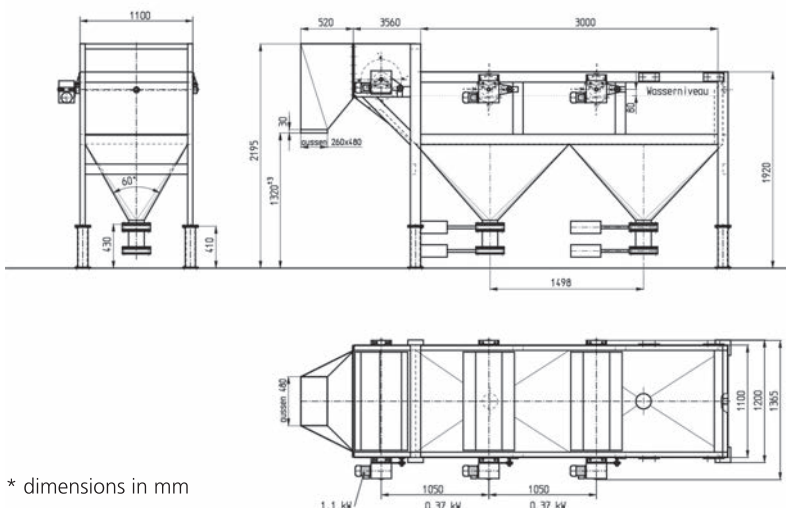
Separation tank (Swim-sink)

Swim-sink tanks use the different specific weights of the various kinds of plastics to separate them. Typical applications are the separation of PET or PVC (both sink) from polyolefines, such as PE or PP (both of them swim). The light fraction is transported along the surface of the water by means of paddle drums to a discharge conveyor; the heavy fraction are extracted – depending on its amount – either by a pair of pneumatic valves at the bottom of the tank or by a scrape conveyor mounted below the tank.



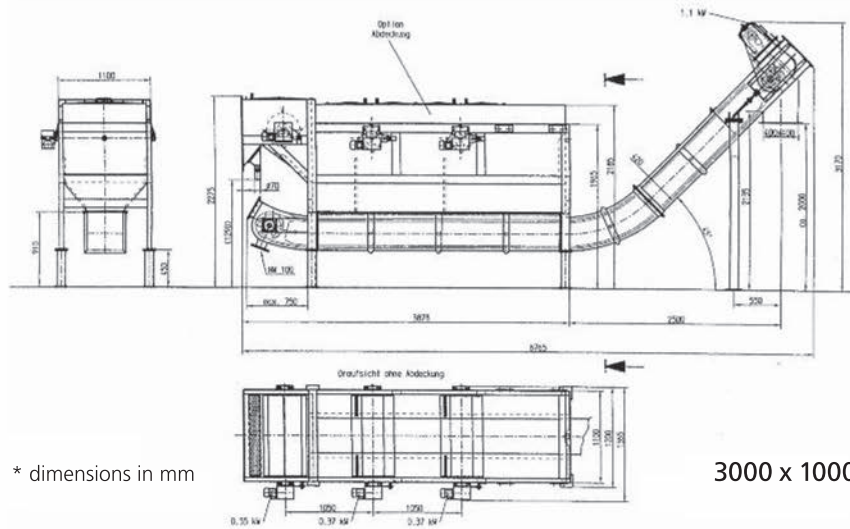
Technical data:

| Separation tank (L x W) | 2000 x 800 mm | 3000 x 1000 mm | 3000 x 1000 mm | 4000 x 1800 mm |
|--|--------------------------------|----------------|----------------|----------------|
| Drives (kW) | | | | |
| 2 transport drums | 0,75 | 0,75 | 0,75 | 1,1 |
| 3 transport drums | / | / | / | 1,1 |
| 1 Discharge drive | 0,75 | 0,75 | 1,1 | 3,0 |
| Total power of drives (kW) | 1,1 - 1,5 | 3 - 4 | 6 - 8. | 8 - 11 |
| Discharge with scraping chain conveyor | N/A | N/A | inkl. | incl. |
| Throughput (t/h) | | | | |
| Hard plastic | ca. 2,5 | ca. 3,0 | ca. 3,0 | ca. 4 - 5 |
| Film | / | 0,5 - 0,7 | / | 0,7 - 1,0 |
| PET flake | see separate information sheet | | | |



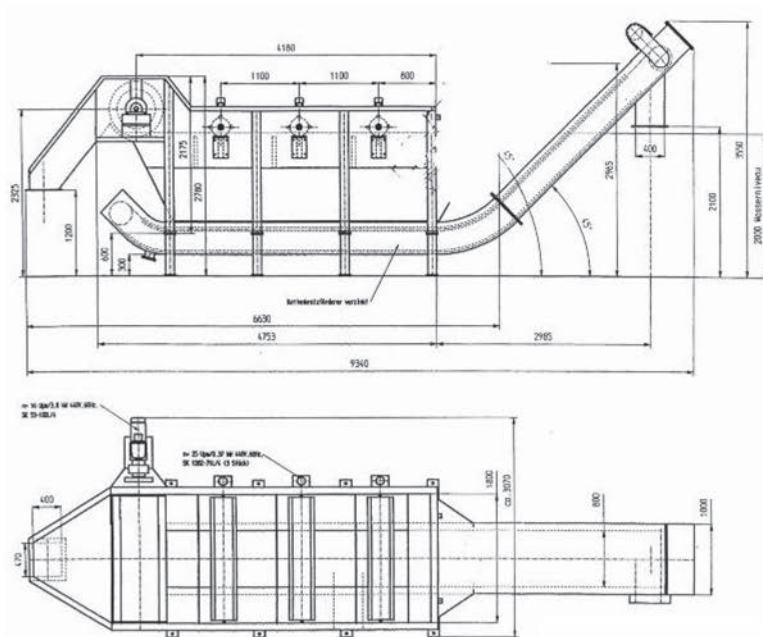
* dimensions in mm

3000 x 1000



* dimensions in mm

3000 x 1000



* dimensions in mm

4000 x 1800

Our Product Range

Size Reduction

- Shredder
- Granulators
- Pulverizing Systems

Washing / Separation Systems & Components

- Pre-washing Units
- Friction Washers
- Separation Tanks and Hydrocyclones
- Mechanical and Thermal Drying
- Water Processing

Agglomeration

- Plastcompactors

Service

- Parts and Overhalls
- Inspections and Trouble Shooting
- Upgrades and Performance Service

HERBOLD Meckesheim GmbH

Industriestr. 33 • 74909 Meckesheim • Fon: + 49 (0) 6226 / 932-0 • Mail: HERBOLD@HERBOLD.com • Web: www.HERBOLD.com

Specifications are not binding and subject to change without notice. 10 / 2019